

# Bahrain International Airport

## Traffic Statistics & Trends January - August 2008

### PASSENGERS

BIA	AUG 08	AUG 07	%	CUM 2008	CUM 2007	%
Disembarked	439,186	377,279	16%	2,832,564	2,286,454	24%
Embarked	398,488	333,906	19%	2,823,974	2,231,624	27%
Transit	29,630	26,838	10%	234,370	228,988	2%
<b>TOTAL</b>	<b>867,304</b>	<b>738,023</b>	<b>18%</b>	<b>5,890,908</b>	<b>4,747,066</b>	<b>24%</b>

IMMIGRATION	AUG 08	AUG 07	%	CUM 2008	CUM 2007	%
Arrivals	256,048	222,241	15%	1,483,787	1,316,299	13%
Departures	187,695	162,685	15%	1,330,413	1,159,527	15%
<b>TOTAL</b>	<b>443,743</b>	<b>384,926</b>	<b>15%</b>	<b>2,814,200</b>	<b>2,475,826</b>	<b>14%</b>

TRANSFER	AUG 08	AUG 07	%	CUM 2008	CUM 2007	%
<b>TOTAL</b>	<b>393,931</b>	<b>326,259</b>	<b>21%</b>	<b>2,842,338</b>	<b>2,042,252</b>	<b>39%</b>

CARGO & MAIL (TONNES)	AUG 08	AUG 07	%	CUM 2008	CUM 2007	%
<b>TOTAL</b>	<b>34,448</b>	<b>29,705</b>	<b>16%</b>	<b>249,306</b>	<b>247,755</b>	<b>1%</b>

### AIRCRAFT MOVEMENTS

BIA	AUG 08	AUG 07	%	CUM 2008	CUM 2007	%
Arrivals	4,395	3,787	16%	33,442	27,842	20%
Departures	4,429	3,820	16%	33,784	28,143	20%
<b>TOTAL</b>	<b>8,824</b>	<b>7,607</b>	<b>16%</b>	<b>67,226</b>	<b>55,985</b>	<b>20%</b>

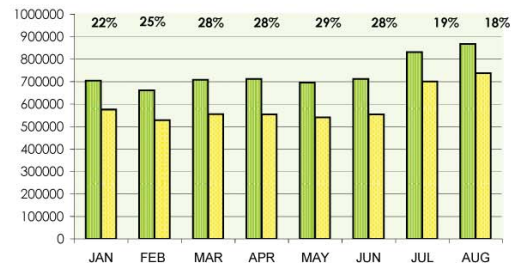
OVERFLYING	AUG 08	AUG 07	%	CUM 2008	CUM 2007	%
<b>TOTAL</b>	<b>29,713</b>	<b>27,613</b>	<b>8%</b>	<b>230,607</b>	<b>204,383</b>	<b>13%</b>

FIR	AUG 08	AUG 07	%	CUM 2008	CUM 2007	%
<b>TOTAL</b>	<b>38,537</b>	<b>35,220</b>	<b>9%</b>	<b>297,833</b>	<b>260,368</b>	<b>14%</b>

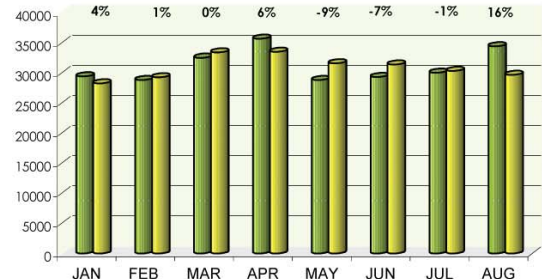
### BAFCO (GALLONS)

COMPANY	AUG 08	AUG 07	%	CUM 2008	CUM 2007	%
Bapco	12,113,444	9,572,101	27%	82,067,041	69,423,673	18%
Chevron	5,735,623	4,917,802	17%	40,743,868	35,658,853	14%
BP	3,122,351	2,296,455	36%	19,518,456	16,910,157	15%
<b>TOTAL</b>	<b>20,971,418</b>	<b>16,786,358</b>	<b>25%</b>	<b>142,329,365</b>	<b>121,992,683</b>	<b>17%</b>

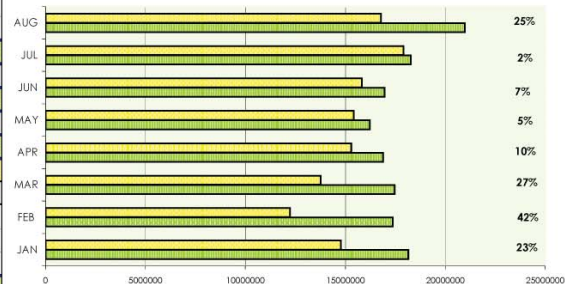
## TOTAL PASSENGERS AT BIA



## TOTAL CARGO CARRIED VIA BIA



## TOTAL BAFCO SALES IN GALLONS



# Bahrain International Airport

## BIA Movements & Overflying Summary - (JAN - AUG 2008)

BIA MOVEMENTS								
Category	Average Movements			CUM 2008	CUM 2007	Growth %	% MOV	
	Day	Week	Month					
Passengers	225	1,575	6,298	50,385	39,178	29%	75%	
Cargo	43	302	1,209	9,668	9,209	5%	14%	
Military	24	167	669	5,355	5,909	-9%	8%	
Private	4	28	112	893	694	29%	1%	
Others	4	29	116	925	995	-7%	1%	
<b>TOTAL</b>	<b>300</b>	<b>2,101</b>	<b>8,403</b>	<b>67,226</b>	<b>55,985</b>	<b>20%</b>	<b>100%</b>	

Overflying MOVEMENTS								
Category	Average Movements			CUM 2008	CUM 2007	Growth %	% MOV	
	Day	Week	Month					
Passengers	619	4,334	17,437	138,697	134,851	3%	60%	
Cargo	35	247	951	7,910	7,585	4%	3%	
Military	186	1,301	5,159	41,628	39,905	4%	18%	
Private	24	165	642	5,215	4,661	12%	2%	
Others	166	1,161	4,754	37,157	17,381	114%	16%	
<b>TOTAL</b>	<b>1,030</b>	<b>7,209</b>	<b>28,943</b>	<b>230,607</b>	<b>204,383</b>	<b>13%</b>	<b>100%</b>	

TOTAL BIA MOVEMENTS (ARR & DEP)



TOTAL OVERFLYING MOVEMENTS

