

# Bahrain International Airport

Kingdom of Bahrain  
Civil Aviation Affairs  
Air Transport Directorate

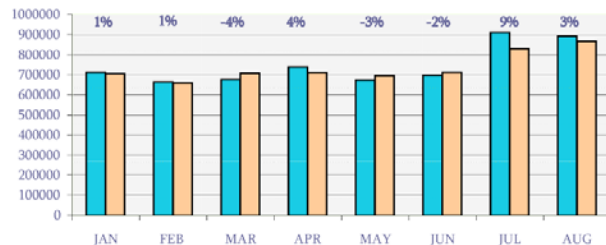


## Flash Report (A)

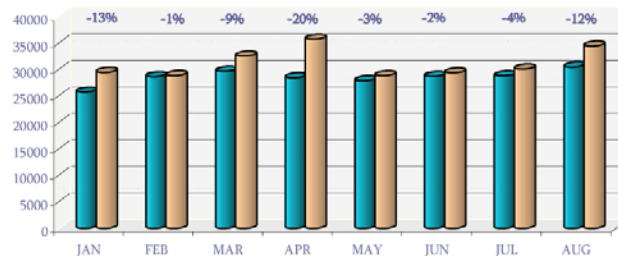
Traffic Statistics & Trends - (Jan - Aug) 2009

PASSENGERS						
BIA	AUG 09	AUG 08	%	CUM 2009	CUM 2008	%
Disembarked	455,213	439,186	4%	2,878,225	2,832,719	2%
Embarked	411,624	398,488	3%	2,882,472	2,824,064	2%
Transit	24,982	29,630	-16%	207,161	234,370	-12%
<b>TOTAL</b>	<b>891,819</b>	<b>867,304</b>	<b>3%</b>	<b>5,967,858</b>	<b>5,891,153</b>	<b>1%</b>
IMMIGRATION						
	AUG 09	AUG 08	%	CUM 2009	CUM 2008	%
Arrivals	239,214	256,048	-7%	1,531,853	1,483,787	3%
Departures	174,108	187,695	-7%	1,402,533	1,330,413	5%
<b>TOTAL</b>	<b>413,322</b>	<b>443,743</b>	<b>-7%</b>	<b>2,934,386</b>	<b>2,814,200</b>	<b>4%</b>
TRANSFER						
	AUG 09	AUG 08	%	CUM 2009	CUM 2008	%
<b>TOTAL</b>	<b>453,515</b>	<b>393,931</b>	<b>15%</b>	<b>2,826,311</b>	<b>2,842,583</b>	<b>-1%</b>
CARGO & MAIL						
	AUG 09	AUG 08	%	CUM 2009	CUM 2008	%
<b>TOTAL</b>	<b>30,470</b>	<b>34,448</b>	<b>-12%</b>	<b>228,417</b>	<b>249,306</b>	<b>-8%</b>
AIRCRAFT MOVEMENTS						
BIA	AUG 09	AUG 08	%	CUM 2009	CUM 2008	%
Arrivals	4,469	4,395	2%	33,611	33,442	1%
Departures	4,516	4,429	2%	33,955	33,784	1%
<b>TOTAL</b>	<b>8,985</b>	<b>8,824</b>	<b>2%</b>	<b>67,566</b>	<b>67,226</b>	<b>1%</b>
OVERFLYING						
	AUG 09	AUG 08	%	CUM 2009	CUM 2008	%
<b>TOTAL</b>	<b>32,763</b>	<b>29,713</b>	<b>10%</b>	<b>249,201</b>	<b>230,607</b>	<b>8%</b>
HR						
	AUG 09	AUG 08	%	CUM 2009	CUM 2008	%
<b>TOTAL</b>	<b>41,748</b>	<b>38,537</b>	<b>8%</b>	<b>316,767</b>	<b>297,833</b>	<b>6%</b>
BAFCO (GALLONS)						
COMPANY	AUG 09	AUG 08	%	CUM 2009	CUM 2008	%
Bapco	11,529,549	12,113,444	-5%	82,759,333	82,067,041	1%
Chevron	5,780,844	5,735,623	1%	38,375,971	40,743,868	-6%
BP	2,920,627	3,122,351	-6%	24,092,174	19,518,456	23%
<b>TOTAL</b>	<b>20,231,020</b>	<b>20,971,418</b>	<b>-4%</b>	<b>145,227,478</b>	<b>142,329,365</b>	<b>2%</b>

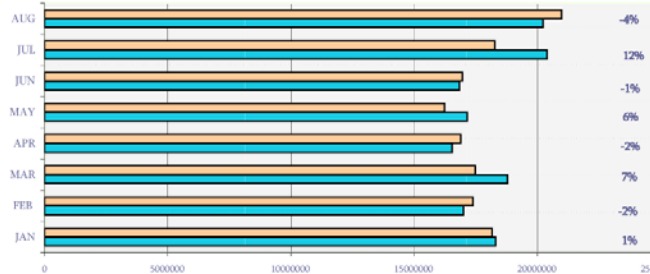
TOTAL PASSENGERS AT BIA



TOTAL CARGO CARRIED VIA BIA



TOTAL BAFCO SALES IN GALLONS



# Bahrain International Airport

Kingdom of Bahrain  
Civil Aviation Affairs  
Air Transport Directorate



## Flash Report (B)

BIA Movements & Overflying Summary - (JAN - AUG 2009)

BIA MOVEMENTS		Average Movements			CUM 2009		CUM 2008		Growth %		% MOV
Category	Day	Week	Month								
Passengers	238	1,669	6,678	53,766	50,385	7%	80%				
Cargo	33	231	926	7,423	9,668	-23%	11%				
Military	22	155	620	5,095	5,355	-5%	8%				
Private	2	13	50	362	893	-59%	1%				
Others	4	29	117	920	925	-1%	1%				
<b>TOTAL</b>	<b>300</b>	<b>2,098</b>	<b>8,391</b>	<b>67,566</b>	<b>67,226</b>	<b>1%</b>	<b>100%</b>				
Overflying MOVEMENTS		Average Movements			CUM 2009		CUM 2008		Growth %		% MOV
Category	Day	Week	Month								
Passengers	630	4,410	17,641	141,948	138,697	2%	57%				
Cargo	26	179	718	5,711	7,910	-28%	2%				
Military	172	1,204	4,818	38,602	41,628	-7%	15%				
Private	21	145	580	4,466	5,215	-14%	2%				
Others	256	1,791	7,163	58,474	37,157	57%	23%				
<b>TOTAL</b>	<b>1,104</b>	<b>7,730</b>	<b>30,920</b>	<b>249,201</b>	<b>230,607</b>	<b>8%</b>	<b>100%</b>				

TOTAL BIA MOVEMENTS (ARR & DEP)



TOTAL OVERFLYING MOVEMENTS

