

Bahrain International Airport

Traffic Statistics & Trends January - June 2008

PASSENGERS

BIA	JUN 08	JUN 07	%	CUM 2008	CUM 2007	%
Disembarked	332,456	255,115	30%	2,017,855	1,591,935	27%
Embarked	354,140	275,914	28%	1,997,431	1,539,141	30%
Transit	25,475	23,558	8%	177,435	178,104	0%
TOTAL	712,071	554,587	28%	4,192,721	3,309,180	27%

IMMIGRATION	JUN 08	JUN 07	%	CUM 2008	CUM 2007	%
Arrivals	167,741	146,510	14%	1,038,612	927,542	12%
Departures	172,302	153,233	12%	923,822	807,389	14%
TOTAL	340,043	299,743	13%	1,962,434	1,734,931	13%

TRANSFER	JUN 08	JUN 07	%	CUM 2008	CUM 2007	%
TOTAL	346,553	231,286	50%	2,052,852	1,396,145	47%

CARGO & MAIL (TONNES)	JUN 08	JUN 07	%	CUM 2008	CUM 2007	%
TOTAL	29,364	31,439	-7%	184,786	187,697	-2%

AIRCRAFT MOVEMENTS

BIA	JUN 08	JUN 07	%	CUM 2008	CUM 2007	%
Arrivals	4,164	3,341	25%	24,649	20,228	22%
Departures	4,204	3,379	24%	24,916	20,459	22%
TOTAL	8,368	6,720	25%	49,565	40,687	22%

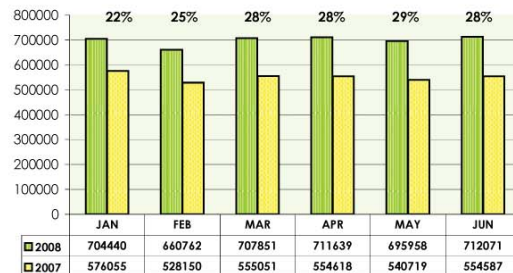
OVERFLYING	JUN 08	JUN 07	%	CUM 2008	CUM 2007	%
TOTAL	27,972	25,208	11%	171,875	149,708	15%

FIR	JUN 08	JUN 07	%	CUM 2008	CUM 2007	%
TOTAL	36,340	31,928	14%	221,440	190,395	16%

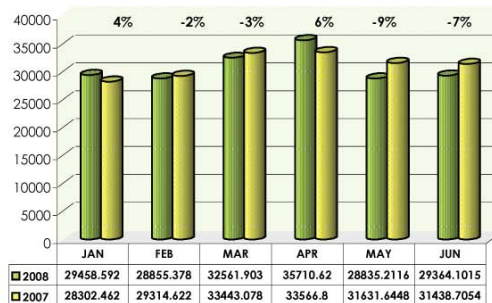
BAFCO (GALLONS)

COMPANY	JUN 08	JUN 07	%	CUM 2008	CUM 2007	%
Bapco	9,560,103	8,922,329	7%	59,489,878	49,778,361	20%
Chevron	4,996,907	4,742,108	5%	29,916,351	25,597,339	17%
BP	2,404,036	2,159,733	11%	13,682,078	11,930,167	15%
TOTAL	16,961,046	15,824,170	7%	103,088,307	87,305,867	18%

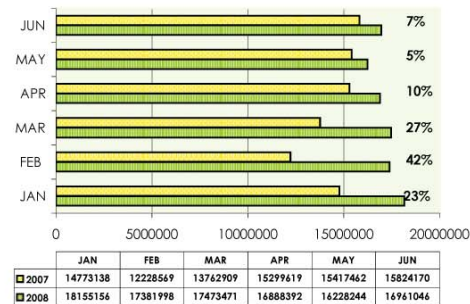
TOTAL PASSENGERS AT BIA



TOTAL CARGO CARRIED VIA BIA



TOTAL BAFCO SALES IN GALLONS



Bahrain International Airport

BIA MOVEMENTS		Average Movements						
Category	Day	Week	Month	CUM 2008	CUM 2007	Growth %	% MOV	
Passengers	219	1,530	6,119	36,713	27,794	32%	74%	
Cargo	43	303	1,211	7,267	6,882	6%	15%	
Military	24	168	674	4,042	4,612	-12%	8%	
Private	5	34	134	806	542	49%	2%	
Others	4	31	123	737	857	-14%	1%	
TOTAL	295	2,065	8,261	49,565	40,687	22%	100%	

Overflying MOVEMENTS		Average Movements						
Category	Day	Week	Month	CUM 2008	CUM 2007	Growth %	% MOV	
Passengers	609	4,260	17,042	103,138	98,936	4%	60%	
Cargo	36	249	995	6,239	5,360	16%	4%	
Military	186	1,302	5,206	31,418	28,532	10%	18%	
Private	24	166	663	4,023	3,838	5%	2%	
Others	165	1,152	4,606	27,057	13,042	107%	16%	
TOTAL	1,018	7,128	28,512	171,875	149,708	15%	100%	

TOTAL BIA MOVEMENTS (ARR & DEP)



TOTAL OVERFLYING MOVEMENTS

