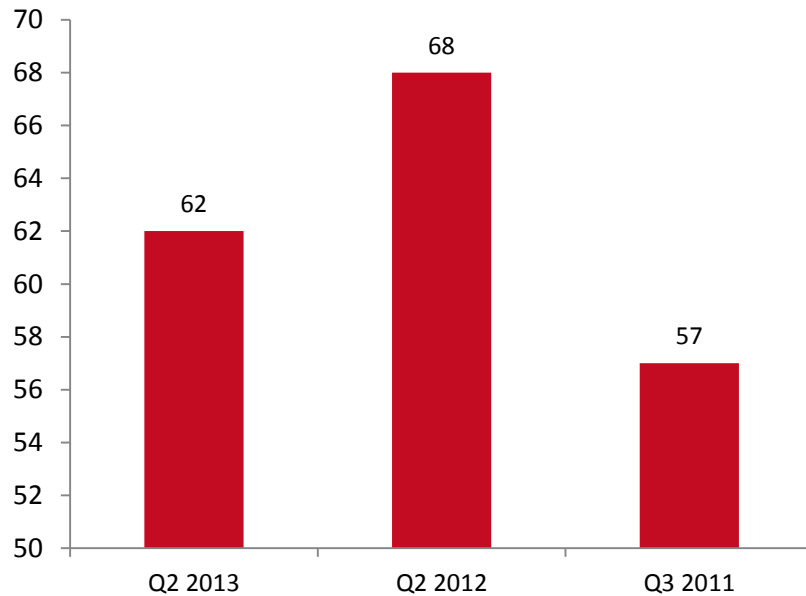


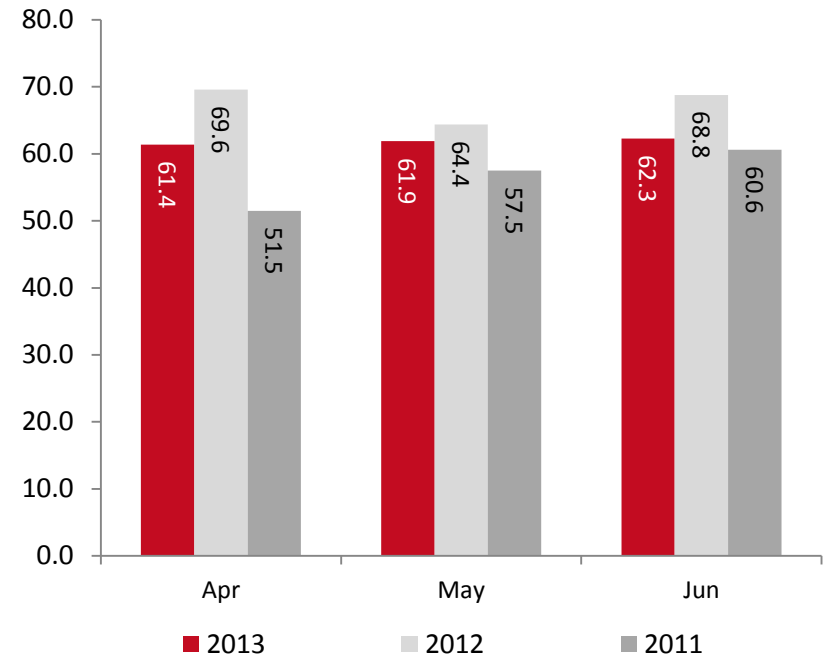
Berth Productivity

Comparing second quarter of 2013, with the berth productivity for the same period of 2012, it decreased reaching an average of 62 moves/hour which is a decrease of 9%. Also, there was a 9% increase comparing the same period of 2011 with 2013.

Berth Productivity (Moves/Hour)



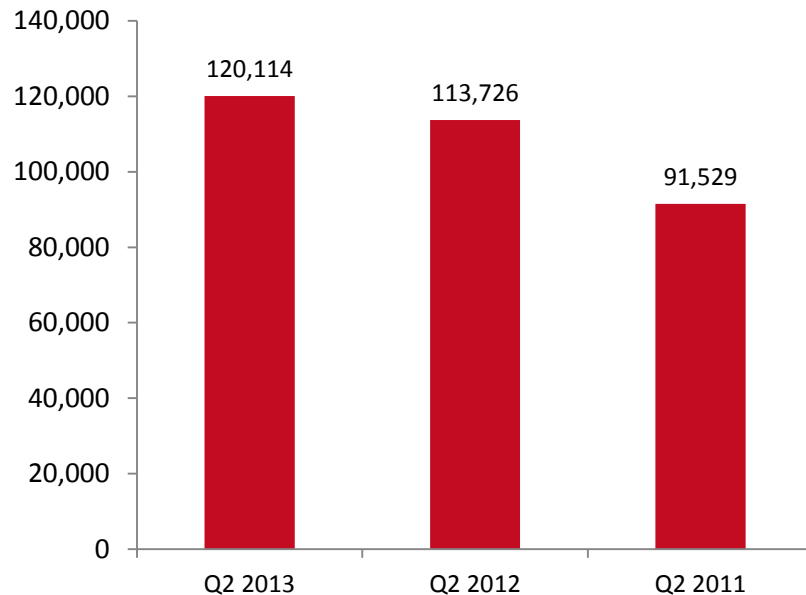
Monthly Berth Productivity (Moves/Hour)



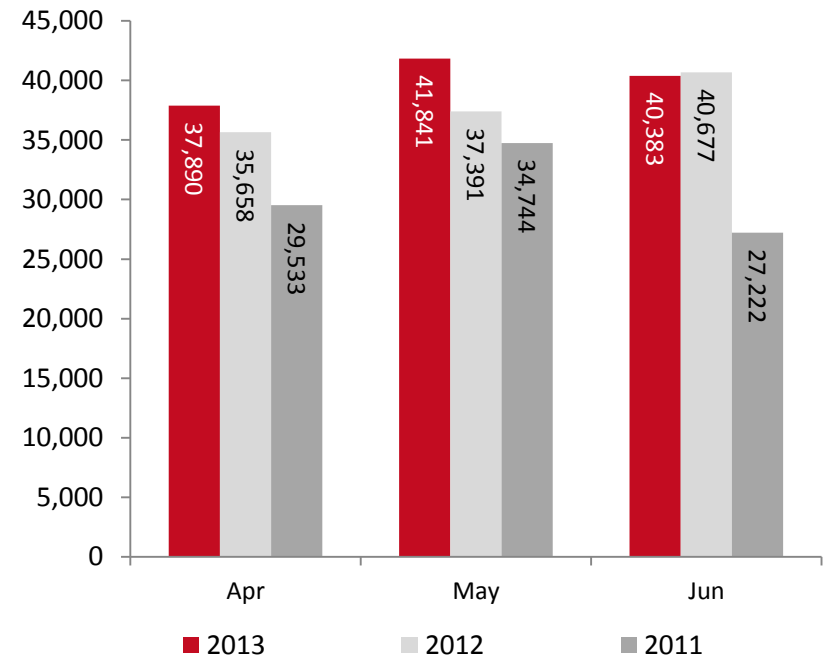
Container Throughput

The decrease in the number of container vessels berthing at KBSP in the second quarter of 2013 had impacted differently on the container throughput TEU, an increase of 25% was noted during the second quarter of 2013 on the container throughput compared to the first quarter of 2013. Whereas, quarter two 2013 recorded the highest numbers of TEU's in comparison to the years 2011 and 2012. The total number of container throughput was fluctuating recording a decrease of 3% for the month of June 2013 in comparison to May of the same year and in comparison to of April 2013 it had increased to 7%.

Container Throughput (TEU)



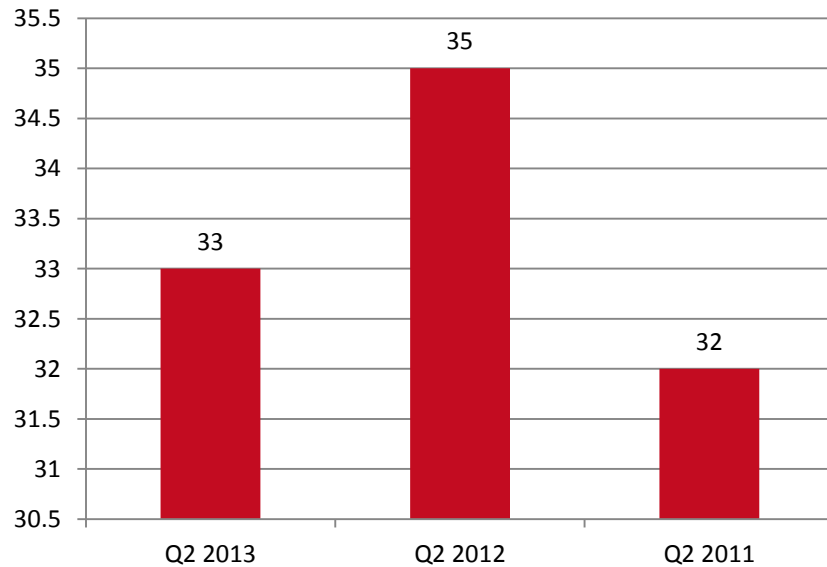
Monthly Container Throughput (TEU)



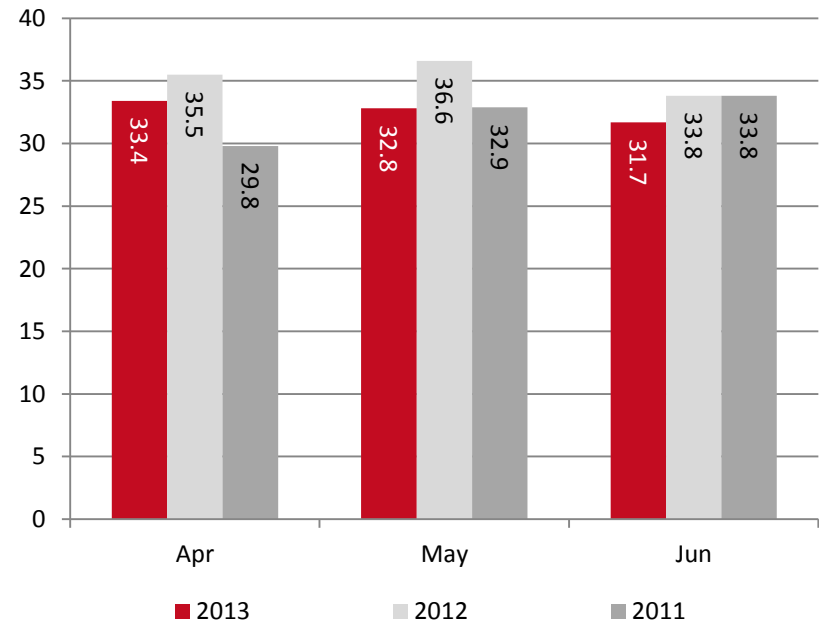
Gross Crane Productivity

Comparing with the second quarter of 2012, the gross crane productivity in the second quarter 2013 had decreased by 6% to an average of 33 moves per crane. Comparing GCP for second quarter 2011 with same period in 2013 there was an increase of 3%.

Gross Crane Productivity (Moves/Crane)



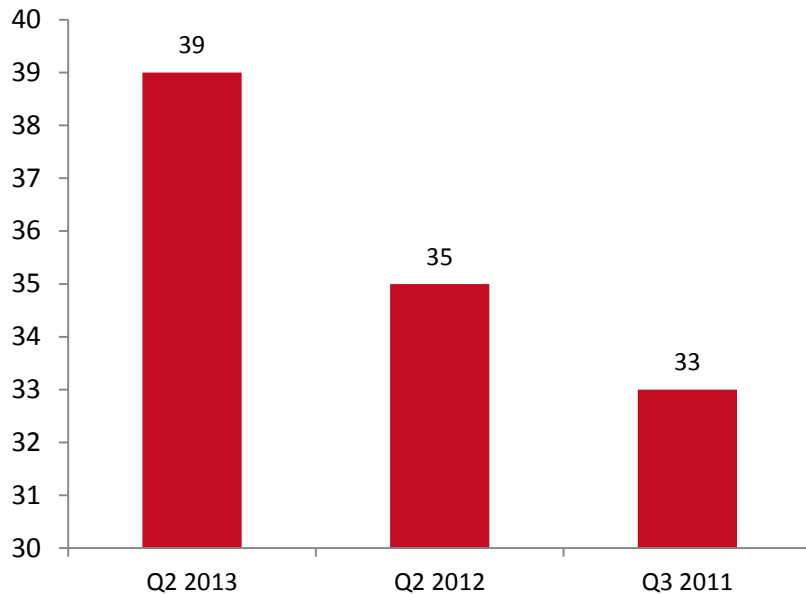
Monthly Crane Productivity (Moves/Crane)



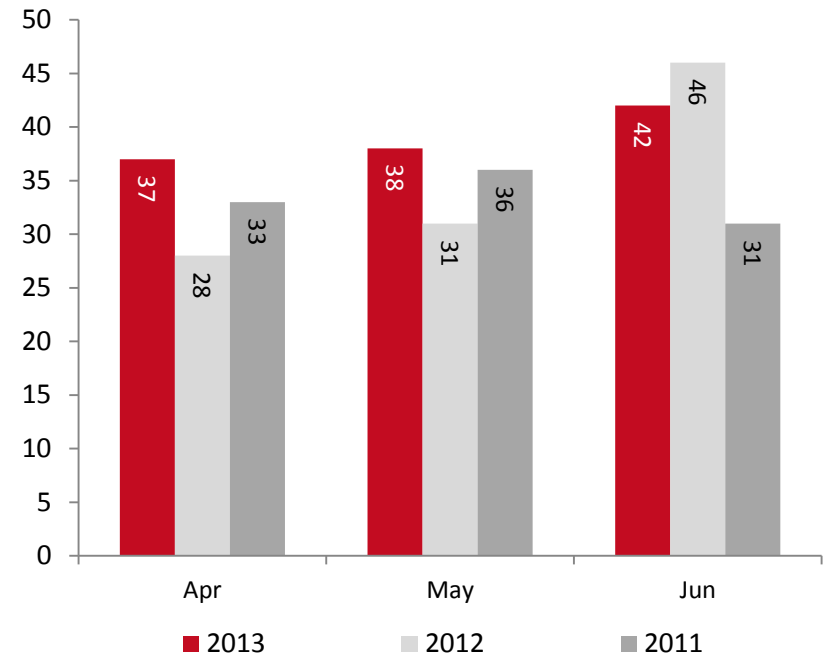
Gate Turn Time

The gate turn time is the truck turnaround time that is calculated starting from the time the truck enters the container terminal through the gate booth, going to the terminal yard and turning back to exit the port through the out gate booth. The gate turn time is constant and has been maintained within the range of 28-40 minutes. However, during the second quarter of 2013 the gate turn time reached an average of 39 minutes.

Gate Turn Time (Minutes)



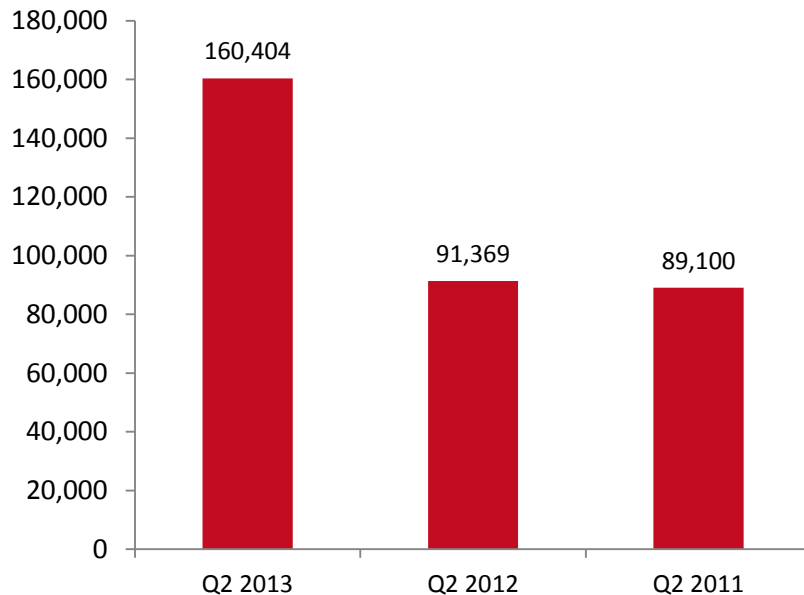
Monthly Gate Turn Time (Minutes)



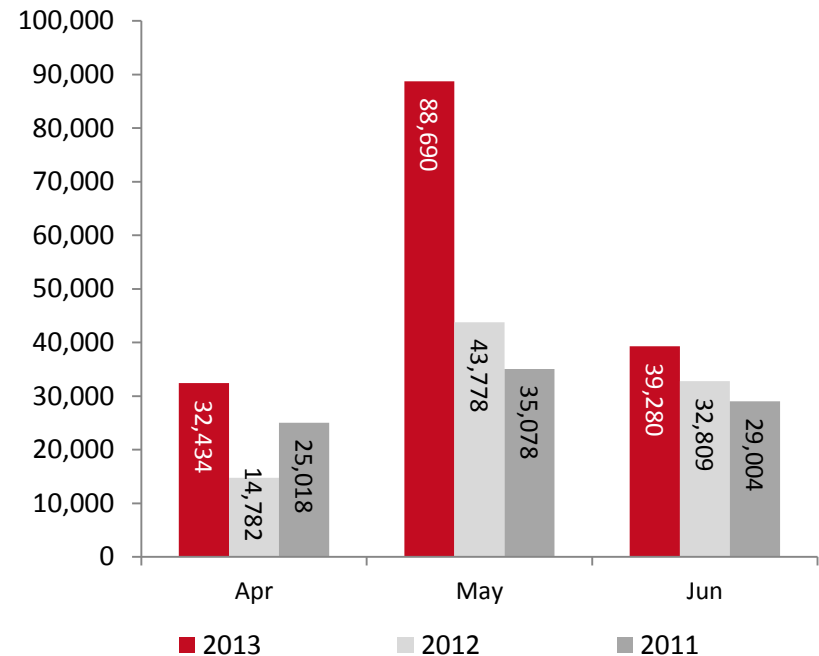
General Cargo Throughput

Though there was a 7% decrease in the second quarter of 2013 general cargo vessels calling KBSP, general cargo throughput in the second quarter 2013 had increased by 10% in comparison with the first quarter 2013 recording 160,404 FT. While comparing between 2011, 2012 and 2013 for the second quarter the general cargo throughput in 2013 was the highest with 160,404 FT. During Q.2 2013, the general cargo freight tons fluctuated. May records were the highest at 88,690 FT, which is a 56% decrease in comparison to June of the same year. In April, the general cargo freight ton was 32,434 FT and in June the general cargo freight ton was recorded at 39,280 FT.

General Cargo Volume (FT)



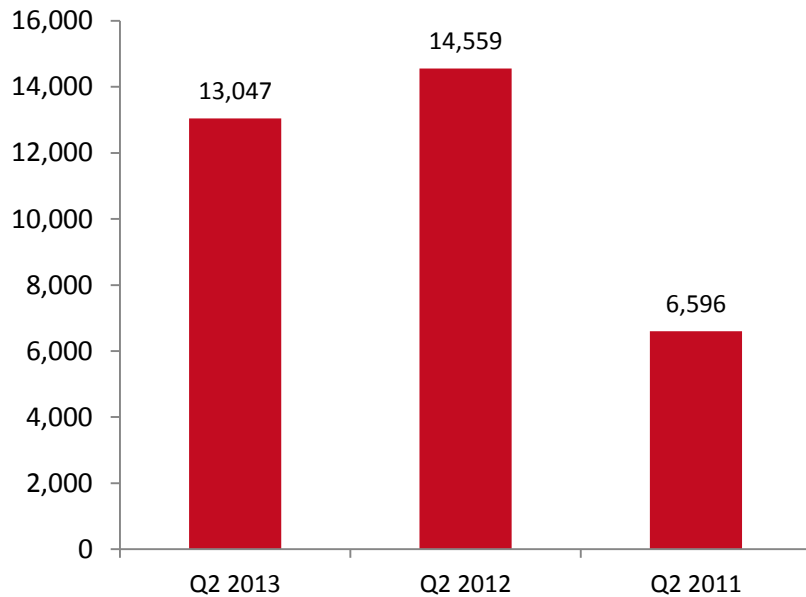
Monthly General Cargo Volume (FT)



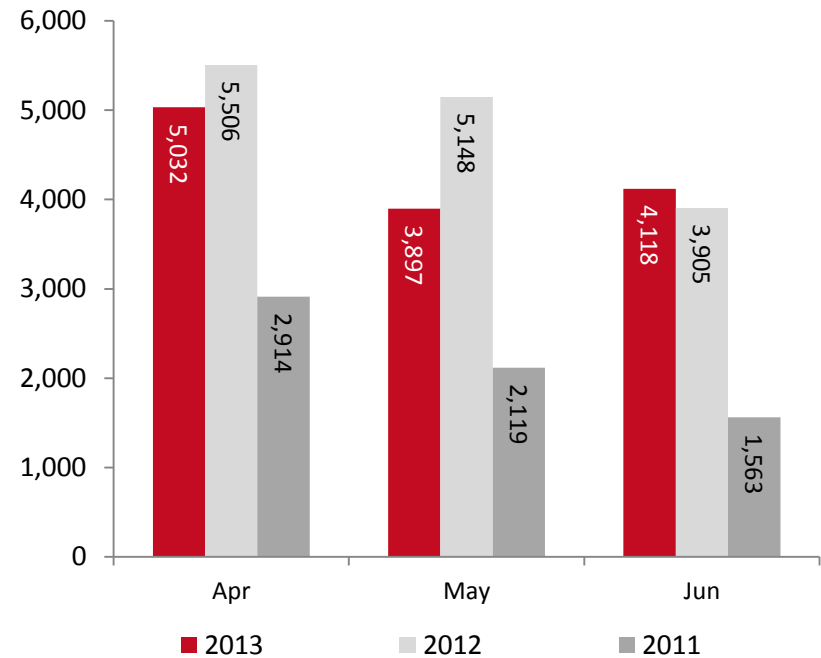
Vehicles

Number of cars imported to Bahrain via sea decreased during Q.2 2013, in comparison to 2012. A total of 13,047 vehicles were imported via KBSP during Q.2 of 2013, which are a 10% decrease in comparison to the same quarter during 2012 and a 98% increase in comparison to Q.2 2011.

Car Volume



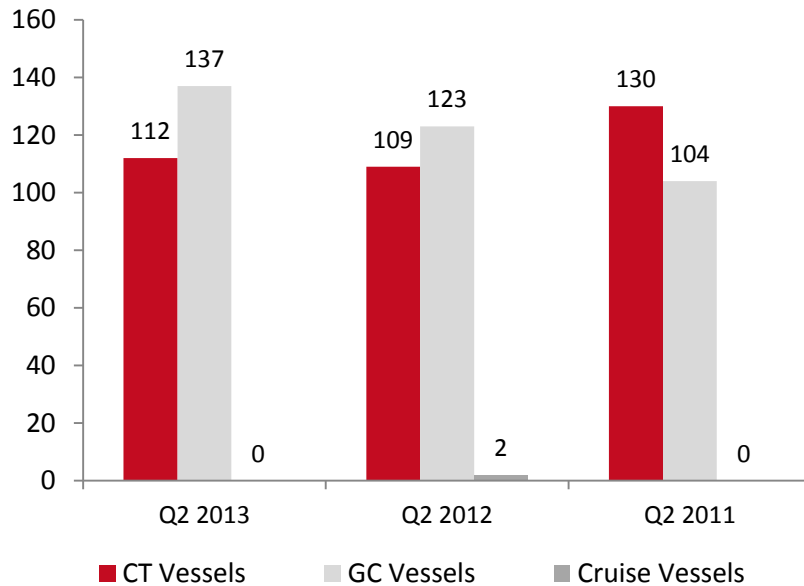
Monthly Car Volume



Vessel Movement

The number of container vessels in the second quarter of 2013 had decreased by 9% in comparison to the first quarter of 2013. The number of general cargo vessels in the second quarter had decreased as well by 7% with 137 vessels calling KBSP when comparing with the first quarter of 2013. The cruise vessels calling KBSP during the second quarter of 2013 recorded nil vessels, while 22 vessels called during the first quarter of the year 2013. The total number of vessels calling KBSP had decreased by 14% for the month of June 2013 in comparison to the previous month of May.

Number of Vessels Calling at KBSP



Monthly Total Vessels Berthed at KBSP

