



Traffic Statistics - OCT 2010

SCHEDULES

	Winter 2010/2011	Winter 2009/2010	DIFF.	%
Number of Airlines	43	50	(7)	-14%
Number of Destinations	47	63	(16)	-25%
Number of flights/week	1,095	1,096	(1)	0%

PASSENGERS

BIA	OCT 10	OCT 09	%	CUM 2010	CUM 2009	%
Disembarked	347,528	375,861	-8%	3,571,523	3,609,552	-1%
Embarked	335,308	348,668	-4%	3,563,541	3,567,770	0%
Transit	19,856	22,872	-13%	243,212	252,006	-3%
TOTAL	702,692	747,401	-6%	7,378,276	7,429,328	-1%

AIRCRAFT MOVEMENTS

BIA	OCT 10	OCT 09	%	CUM 2010	CUM 2009	%
Arrivals	4,453	4,424	1%	43,920	42,213	4%
Departures	4,502	4,468	1%	43,275	42,645	1%
TOTAL	8,955	8,892	1%	87,195	84,858	3%

OVERFLYING	OCT 10	OCT 09	%	CUM 2010	CUM 2009	%
TOTAL	38,429	33,601	14%	349,888	313,436	12%

FIR	OCT 10	OCT 09	%	CUM 2010	CUM 2009	%
TOTAL	47,384	42,493	12%	437,083	398,294	10%

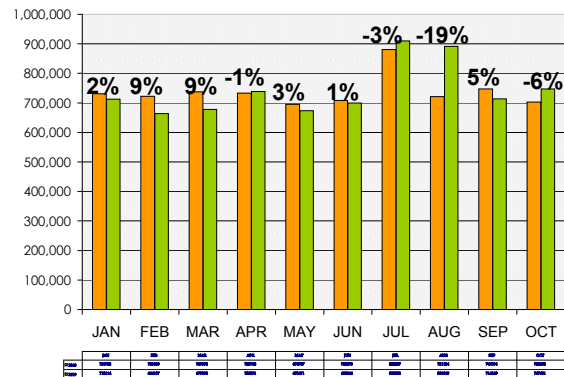
CARGO & MAIL (TONNES)

TOTAL	OCT 10	OCT 09	%	CUM 2010	CUM 2009	%
TOTAL	27,904	27,896	0%	276,741	281,993	-2%

BAFCO (GALLONS)

BAFCO (GALLONS)	OCT 10	OCT 09	%	CUM 2010	CUM 2009	%
TOTAL	17,314,019	19,168,312	-10%	170,968,945	182,986,585	-7%

TOTAL PASSENGERS AT BIA
(JAN - OCT 2010/2009)



TOTAL CARGO CARRIED VIA BIA IN TONNES

