



Traffic Statistics - SEP 2011

AIRCRAFT MOVEMENTS SUMMARY

	SEP 2011			SEP 2010		
	Per day	Per Week	Per Month	Per day	Per Week	Per Month
Aircraft Arrivals / Departure	307	2,149	8,596	312	2,184	8,737
Overflying movements	1,400	9,800	39,202	1,272	8,905	35,621

PASSENGERS

	SEP 2011	SEP 2010	%	CUM 2011	CUM 2010	%
BIA						
Disembarked	372,885	384,473	-3%	2,783,610	3,223,995	-14%
Embarked	311,746	344,547	-10%	2,775,983	3,228,059	-14%
Transit	14,317	18,374	-22%	181,386	223,605	-19%
TOTAL	698,948	747,394	-6%	5,740,979	6,675,659	-14%

IMMIGRATION

	SEP 2011	SEP 2010	%	CUM 2011	CUM 2010	%
Arrivals	223,910	223,393	0%	1,416,260	1,713,309	-17%
Departures	150,793	171,222	-12%	1,337,243	1,598,092	-16%
TOTAL	374,703	394,615	-5%	2,753,503	3,311,401	-17%

TRANSFER

	SEP 2011	SEP 2010	%	CUM 2011	CUM 2010	%
TOTAL	309,928	334,405	-7%	2,806,090	3,140,653	-11%

AIRCRAFT MOVEMENTS

	SEP 2011	SEP 2010	%	CUM 2011	CUM 2010	%
BIA						
Arrivals	4,274	4,339	-1%	37,419	39,567	-5%
Departures	4,322	4,398	-2%	37,872	38,873	-3%
TOTAL	8,596	8,737	-2%	75,291	78,440	-4%

OVERFLYING

	SEP 2011	SEP 2010	%	CUM 2011	CUM 2010	%
TOTAL	39,202	35,621	10%	340,474	311,459	9%

FIR

	SEP 2011	SEP 2010	%	CUM 2011	CUM 2010	%
TOTAL	47,798	44,358	8%	411,577	389,899	6%

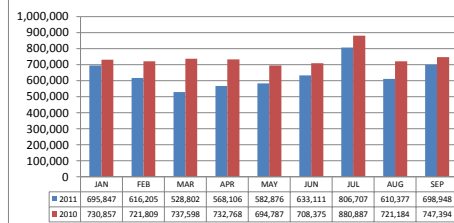
CARGO & MAIL (TONNES)

	SEP 2011	SEP 2010	%	CUM 2011	CUM 2010	%
Discharged	12,907	13,548	-5%	119,245	135,587	-12%
Uplifted	9,955	10,815	-8%	96,130	113,249	-15%
TOTAL	22,862	24,363	-6%	215,375	248,836	-13%

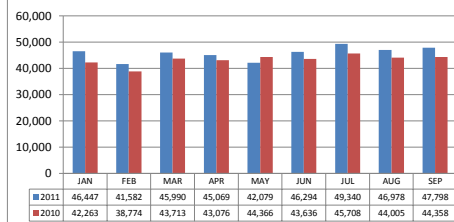
BAFCO (GALLONS)

	SEP 2011	SEP 2010	%	CUM 2011	CUM 2010	%
COMPANY TOTAL	17,436,585	17,311,627	1%	142,271,636	153,654,926	-7%

Passengers Comparison 2011/2010



F.I.R Comparison 2011/2010



Cargo Comparison in Tonnes 2011/2010

